

62.09

LIBRARY
RECEIVED
★ OCT 31 1952 ★
U.S. Department of Agriculture

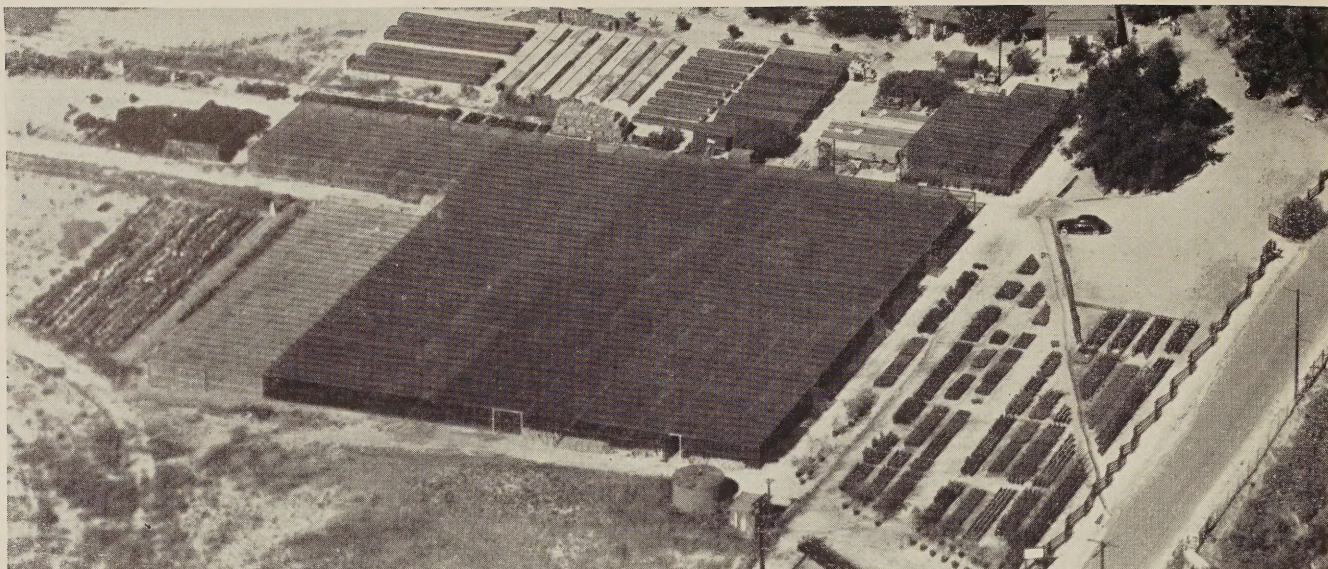


JOSHUA E. YOUTZ

NUCCIO'S NURSERIES

Altadena, Calif.

Camellias for 1953



AERIAL VIEW OF NUCCIO'S NURSERIES

WELCOME VISITORS!

Most of our customers come to us through the United States mail, but we enjoy having visitors stop in to see us, and we cordially invite you to do so whenever you can. We are open daily **except Wednesday**, and business hours are from 8:00 to 5:00. During the period from June 1 through September 15 we are also closed on Sundays.

TERMS OF SALE

Please send your remittance with your order. California customers add 3% sales tax to the total. Prices in this catalog are subject to change without notice, and are all F.O.B. Altadena, California. Please specify the way you wish to have us make shipment (parcel post, express, motor freight, railroad freight or air freight). When no instructions are given we will ship via Railway Express. We make no crating charge on orders over \$20.00, but **if your order amounts to less than \$20.00, please add \$1.00 for the first plant and 25c for each additional plant ordered** in order to cover crating costs.

GUARANTEE

We guarantee all plants to be true to name, to be well grown, and properly packed for shipment. Shortages, damages or losses should be reported to the transportation agency immediately on arrival, and if you will notify us, we will give you all the assistance we can. At no time will we be responsible for more than the purchase price.

PLEASE READ BEFORE ORDERING

All of our Camellias are container grown (1-gal., 3-gal., 5-gal. and 6-gal.) and will be shipped in their containers. Handled this way Camellias can be shipped and planted every month of the year.

We propagate over 650 varieties of Camellias, many of which are too rare to be in the catalog list. Information desired on varieties not listed will be supplied on request.

We also have large, specimen plants of many varieties, and we will quote prices for these on request.

Notice to residents of the states of Alabama, Florida, Louisiana, Mississippi, North Carolina, South Carolina, Tennessee and Virginia: All shipments of Camellias into these states will be bare-rooted, re-balled in peat moss, burlapped and wrapped in waterproof paper. We are experienced in shipping bare-rooted Camellias and have found the above method so successful that we are giving the same guarantee we give our container grown Camellias. We have successfully shipped bare-rooted Camellias all months of the year, but for best results we advise shipment from mid-September through May.

SAVE MONEY

We offer generous discounts for quantity purchases. Please refer to the table of discounts on page 13.

How to Grow Fine Camellias

Where and How to Plant

Even though Camellias can and are being successfully grown in full sun, the best exposure is filtered shade (trees, lath, etc.), morning, or afternoon sun. If planting a Camellia in full sun, it should be done in the winter months in order to allow the plant to become acclimated before summer heat.

Dig a hole at least twice as deep and twice as big around as the size of the container or ball of the plant. Add $\frac{1}{3}$ peat moss or leaf mold to soil taken from hole and mix thoroughly. If soil is heavy (clay or adobe) use at least 50% peat moss or leaf mold. Fill the hole with sufficient amount of mixed soil so that after firming, the top of the plant ball will set at least one inch above the surrounding area. **NEVER PLANT TOO DEEP.** After setting plant in hole, fill with the mixed soil and pack firmly. Make a basin around the plant and give it a thorough watering to settle soil. Place about one inch of peat moss in basin for mulch.

Watering

Do not allow plants to become dry, and more important, never keep soil soggy wet. Either condition can cause buds to drop or loss of plant. Always bear in mind that a Camellia likes to be kept reasonably moist, but also requires good drainage.

Fertilizing

Camellias should be fertilized during the summer growing months, starting as early as March and not later than August. Three feedings in this period are sufficient, i.e., April, June and August. Space feedings at least 30 days apart. Any of the better known acid fertilizers may be used, preferably cottonseed meal. For amount follow directions on package. **NEVER OVER-FERTILIZE.**

NUCCIO'S *Supreme Quality* CAMELLIAS

VARIETY	SIZES			
	12"-18"	18"-24"	24"-30"	30"-36"
ADAH PEARL —Pink. Petals heavily veined. Large, semi-double.	\$2.50	\$3.50
ADOLPHE AUDUSSON —Heavy petaled semi-double, deep red. Very large.	3.00	4.00	\$7.50*	\$10.00*
ADOLPHE AUDUSSON VAR. (Special)—Heavily mottled white form of Adolphe Audusson.	400*	7.50*	10.00*
ALBA PLENA —Still one of the best of the pure white formal doubles showing no stamens.	2.50	3.50	6.00	7.50
ANEMONIFLORA ALBA —First release. This outstanding new camellia was imported from Australia by the noted grower, William E. Wylam, and has been closely observed and proven satisfactory by our nursery for several seasons. The large flowers usually have 8 to 12 heavy textured, slightly wavy, white petals surrounding a large center of irregular creamy petaloids hiding low stamens, with an occasional irregular semi-double bloom. Vigorous, upright growth.	10.00*
ANITA —Light pink, striped carmine. Medium to large, semi-double.	2.00	3.00	5.00	6.50
ANN MILLER —New. Large, semi-double to double, pale pink.	5.00*	6.50*
APPLE BLOSSOM (Salunensis)—Single pink and white. Small.	2.00	3.00
ARAJISHI (Aloha)—Salmon-red to deep crimson red. Very early bloomer. Large peony type.	2.00	3.00	5.00	6.50
ARRABELLA —Orange-red. Resembles Reticulata in form. Large, semi-double.	5.00*	7.50*	10.00*
ASPACIA —Variegated form of Emperor of Russia. Crimson spotted with white.	2.00	3.00	5.00
BEAU HARP —Very large, irregular semi-double, brilliant rose-red.	7.50*
BELLA ROMANA —Light pink, striped with dark crimson. Medium-large, double.	2.00	3.00	5.00	6.50
BERENICE BODDY (U.S. Pat. No. 605)—Light pink with deeper pink under petals, shading to a blush center. Medium-large, semi-double.	3.50*	4.50*	6.50*	8.50*
BESSIE MORSE BELLINGRATH —White with faint blush of pink. Large, semi-double.	5.00*	7.50*	10.00*
BETTY THEISEN —A beautiful large, loose, semi-double, pale pink, shading to deeper pink in center.	5.00*	6.50*
BLACK DRAGON —Very dark red. Large, semi-double to peony form.	4.00*	5.00*
BIG BEAUTY —White, blotched and spotted with pink. Large, semi-double to loose peony form.	4.00*	5.00*
BLEICHROEDER —Soft pink, striped with crimson. Medium, rose form, double, occasionally showing stamens.	2.00	3.00	5.00	6.50
BLOOD OF CHINA —Deep salmon-red. Large, semi-double to loose peony form. Late bloomer.	2.00	3.00	5.00	6.50



EMPEROR
WILHELM



ELENA
NOBILE

VARIETY

SIZES

	12"-18"	18"-24"	24"-30"	30"-36"
BLUSH HIBISCUS —White with blush-pink center. Very large single to semi-double.	4.00*	5.00*	7.50*	10.00*
CALIFORNIA —Rose-red, golden stamens, with unusually large petals. Very large, semi-double.	2.50	3.50	6.00
CAMPBELL ASHLEY —Dark red. Large, semi-double to loose peony form.	4.00*	5.00*	7.50*
CAPT. MARTIN'S FAVORITE —Pink, marbled with white. Medium size, full-double imbricated.	2.50	3.50
CATHERINE McCOWAN —New. Light pink. Sport of Eleanor McCowan.	5.00*
CHANDLERI ELEGANS PINK (Francine)—Rose-pink. Very large anemone form.	2.50	3.50	6.00	7.50
CHANDLERI ELEGANS VAR. —Rose-pink, mottled with white. Very large anemone form.	2.50	3.50	6.00	7.50
CHO-CHO-SAN —New. Pale pink, golden stamens. Large, semi-double.	5.00*
CHO-NO-HANAGATA —New. Pale pink. Large, semi-double to peony form.	4.00*	5.00*	7.50*	10.00*
CHOYO-NO-NISHIKI —Large, semi-double variegated. Vividly striped rose-red on pink background. Early bloomer.	5.00*
CLARA GREEN —A very lovely, large anemone formed camellia. Brilliant rose-pink.	5.00*
CLEOPATRA —Pink, marbled with white. Large, full peony form.	2.50	3.50
C. M. HOVEY (Col. Firey)—Brilliant, deep red. Large, full double, imbricated.	2.50	3.50	6.00	7.50
C. M. WILSON —New. Pale pink sport of Chandleri Elegans. Outstanding.	4.00*	5.00*	7.50*	10.00*
CONFLAGRATION —Fire-red. Large, semi-double.	4.00*	5.00*	7.50*
COLLETTII (Collettii Maculata)—Brilliant dark red, blotched with white. Medium, peony form.	4.00*	5.00*	7.50*

VARIETY	SIZES			
	12"-18"	18"-24"	24"-30"	30"-36"
COVINA —Rose-red. Medium, semi-double. Excellent landscape variety.	1.50	2.50	4.50	6.00
CREPE ROSETTE —Pink, veined with red with lighter margined petals. Large, semi-double.	4.00*	5.00*	7.50*
CRUSADER —Deep red. Very large semi-peony form to rose form double.	5.00*	6.50*
DAIKAGURA RED —Bright rose-pink. Early. Very large peony form.	2.00	3.00	5.00	6.50
DAIKAGURA VAR. —Bright rose-pink, splotted with white. Early. Very large peony form.	2.00	3.00	5.00	6.50
DAINTY —Blush-white, striped with pink. Heavily fringed petals. Semi-double. Sport of Tricolor Sieboldi.	4.00*
DAITERIN —Light rose-pink. Very large single with mass of blush-white petaloids in center.	5.00*
DEBUTANTE —Soft pink. Large, full peony form. Early.	2.50	3.50	6.00	7.50
DONCKELARI (Southern)—Red, sometimes marbled white. Very large, semi-double with golden stamens. Slow, bushy growth.	2.50	3.50
DONCKELARI —Same as Donckelari (Southern) with the exception that our parent plant blooms heavily marbled white.	5.00*	6.50*	10.00*
DOROTHY MAC —This Chandleri seedling is identical to its parent but pure white in color and not as large a blossom.	2.50	3.50
DR. SHEPHERD (Te Deum)—Dark red. Very large, from semi-double to full peony to formal double.	4.00*	5.00*	7.50*	10.00*
DR. TINSLEY —New. Large, flesh pink, semi-double to peony. Outstanding.	7.50*
DUCHESS DE CASES —Light pink, mottled white. Medium to large, full peony form.	2.00	3.00	5.00	6.50



← LALLAROOK

NAGASAKI

VARIETY	SIZES			
	12"-18"	18"-24"	24"-30"	30"-36"
DUNCAN BELL —Brilliant red. Very large anemone form.	2.50	3.50	6.00	7.50
EDWIN FOLK —New. Bright red. Very large, loose semi-double.	5.00*
ELEANOR HAGOOD —Pale pink. Medium, formal, very double.	4.00*	5.00*	7.50*	10.00*
ELEANOR HAGOOD VAR. —Pale pink, mottled with white. Medium, formal, very double.	4.00*
ELEANOR McCOWAN —White, striped with red and pink. Large, semi-double to peony form.	2.50	3.50
ELEANOR OF FAIROAKS —Ruby-red, marbled with white. Large, semi-double to peony form. Variegated Vedrline.	2.50	3.50	6.50*	7.50*
ELENA NOBILE —Bright flame-red. Medium, formal double, showing stamens when fully opened.	2.00	3.00	5.00	6.50
ELIZABETH BOARDMAN —White. Very large semi-double with large twisted petals.	2.50	3.50	6.00	7.50*
ELIZABETH FLEMING VAR. —Clear pink, mottled with white. Very large, semi-double.	5.00*
ELIZABETH LE BEY (Patent Pending) —We are very happy to announce that we have the exclusive propagating rights to this outstanding new camellia, which we are releasing for the first time. The rich pink blossoms are very large, hemispherical, semi-double to loose peony form. Vigorous, pendulous growth.	12.50*
EMMA —Large, light pink. Rose form to peony form. Very lovely.	5.00*
EMMETT PFINGSTL —Beautiful red and white variegated form of Joseph Pfingstl. An excellent camellia.	10.00*
EMMY BALCHEN —New. White to blush white. Very large, semi-double to anemone form.	4.00*	5.00*	7.50*
EMPEROR OF RUSSIA —Scarlet. Large, double to peony form.	2.00	3.00	5.00	6.50
EUGENE LIZZIE (Lady Jane Gray) —Rose-pink, marbled with white. Large, semi-double to peony form.	4.00*	5.00*	7.50*
F. G. No. 2 —Brilliant red heavily blotched with white. Large semi-double. Slow, compact growth. Believed to be the same as Iwane Shibori.	5.00*	7.50*	10.00*
FIMBRIATA —Resembles Alba Plena with the exception of the petals which are beautifully fringed.	2.50	3.50	6.00	7.50
FINLANDIA —White. Large, semi-double with fluted petals.	2.00	3.00	5.00	6.50
FINLANDIA VAR. —White, streaked and speckled red form of Finlandia.	2.00	3.00	5.00	6.50
FIREBRAND —Scarlet-red. Large, semi-double.	2.50	6.00*	7.50*
FIREBRAND VAR. —Scarlet-red, heavily spotted with white. Large, semi-double.	4.00*	5.00*	7.50*
FIRST FLUSH (Hybrid Salunensis x Japonica) —Small, single, delicate pink. Profuse bloomer. Valuable as landscape material.	5.00*	7.50*
FLAME —Flame-red. Very large, semi-double. Large petals.	2.50	3.50	6.00
FLAME VAR. —Flame-red, mottled with white. Variegated form of Flame.	4.00*	7.50*
FLAMINGO —Beautiful, large, light pink. Single to semi-double.	5.00*

VARIETY	SIZES			
	12"-18"	18"-24"	24"-30"	30"-36"
FLORENCE STRATTON —White, striped with pink. Large, full formal double. Often sports pure pink blossoms.	3.00	7.50*
FLOWERWOOD (U.S. Pat. No. 1074)—This outstanding sport of Mathotiana is being offered for the first time. Flower form and color identical to Mathotiana but all petals are sharply fimbriated. Outstanding.	7.50*
FRED SANDER —Crimson-red. Medium size, semi-double with curled and heavily fimbriated petals.	4.00*	5.00*	7.50*	10.00*
FRENCH IMPERATOR —Very large full peony form. Extremely dark red.	4.00*
FRIZZLE WHITE —White. Very large, semi-double, with wavy petals intermixed with stamens.	2.50	3.50	6.00	7.50
GEN. DWIGHT EISENHOWER —Deep red. Large, full peony to anemone form.	2.50	3.50	6.00	7.50
GEN. GEO. PATTON —Bright pink. Large, formal double showing stamens.	2.50	3.50	6.00	7.50
GIGANTEA (Emp. Wilhelm)—Brilliant red, marbled with white. Very large, semi-double to peony form.	4.00*	5.00*	7.50*	10.00*
GIGANTEA ALBA —Very large, pure white, single. Prominent golden stamens.	4.00*	5.00*
GLEN 40 —Deep orange-red. Large, full formal double. Slow, compact grower.	4.00*	5.00*	7.50*	10.00*
GLEN 40 VAR. —Deep orange-red, mottled with white. Variegated form of Glen 40.	4.00*
GLENN ALLAN —Deep rose-red. Large, semi-double.	4.00*	5.00*	7.50*
GLENN ALLAN VAR. —Deep rose-red, mottled with white. Variegated form of Glenn Allan.	4.00*	5.00*	7.50*
GLOIRE DE NANTES VAR. —Rose-red, blotched with white. Medium-large, semi-double.	2.00	3.00	5.00	6.50
GOSHOGURUMA —Deep red, occasionally spotted with white. Large, semi-double to peony form.	3.00
GOV. EARL WARREN —Deep, rich pink. Very large, semi-double with some of the center petals having an irregular twist.	3.00	4.00	7.50
GOV. MOUTON —Blood-red, blotched with white. Large, semi-double to peony form.	2.00	3.00	5.00
H. A. DOWNING VAR. —Rose-red, marbled with white. Variegated form of H. A. Downing.	2.00	3.00	5.00
HAKU RAKUTEN —White. Large, semi-double to peony form.	4.00*
HAKU-TSURU (White Crane)—White. Very large, single to semi-double.	4.00*	5.00*	7.50*
HERME (Jordan's Pride)—Pink with white border, streaked rose-pink. Large, semi-double.	1.50	2.50	5.00	6.00
HIGH HAT —Pale pink sport of Daikagura.	4.00*	7.50*	10.00*
HISHI-KARAITO —Small, bell-shaped, semi-double. Delicate pink.	5.00*
IMURA —White. Very large, semi-double.	2.00	3.00	5.00

VARIETY

SIZES

12"-18" 18"-24" 24"-30" 30"-36"

IMPERATOR—Red. Large, full peony form.

2.00 3.00 5.00 6.50

JAMES ALLAN—Fire-red. Very large, semi-double.

4.00* 5.00* 7.50*

JAMES ALLAN VAR.—Fire-red, mottled with white. Variegated form of James Allan.

4.00* 5.00* 7.50*

J. C. WILLIAMS (Hybrid Salunensis x Japonica)—An outstanding new hybrid. Medium sized, light pink, profuse bloomer. Extremely long blooming season.

7.50*

JENNY JONES—Blush white. Large, semi-double.

4.00* 5.00* 7.50* 10.00*

JESSIE KATZ (Pat. Pending)—An outstanding new variety with large, wavy petals. Semi-double, watermelon pink. We are the exclusive West Coast propagators of this fine new camellia.

7.50*

J. J. PRINGLE SMITH VAR.—Dark red, heavily marbled with white. Very large, semi-double.

2.50 3.50 7.50*

JOSEPH HOLLAND—Pink, blotched with white. Full double imbricated.

4.00* 5.00*

JOSEPH PFINGSTL (Pat. No. 927)—A very large dark red, varying in form from semi-double to full formal. Extremely hardy and vigorous growth with long blooming season starting as early as October and extending to April.

10.00*

JOSHUA A. YOUTZ (White Daikagura)—This outstanding camellia was introduced by our nursery in 1950. Its blossoms, which are pure white, full peony form to formal double, are larger than its parent, the Daikagura. Its foliage, growing habit and early blooms are like its parent, making this variety a truly outstanding camellia.

4.00* 5.00* 7.50* 10.00*

WE PARTICULARLY CALL
TO YOUR ATTENTION THE
QUANTITY DISCOUNTS
OFFERED ON PAGE 13



BELLA ROMANA



C. M. HOVEY



[illegible]

(CONTINUE ORDER ON OTHER SIDE)

[illegible]

[illegible]

NUCCIO'S NURSERIES

Date.....

Street or R.F.D.

City _____ State _____

[illegible]

VARIETY

SIZES

12"-18" 18"-24" 24"-30" 30"-36"

KATHERINE NUCCIO (N #104)—This seedling first bloomed in 1942 and has proven itself well worthy of propagation because of its long season of bloom (starting as early as December and blooming through March), its lasting qualities as a cut flower, and its color. A 3 to 3½ inch double formal, rose form, consisting of 60-65 large petals. Brilliant rose-red, with edges of petals cupped inward. Foliage, dark green, medium, slightly twisted. Compact growth.

KENNY—Deep rose-pink, blotched with white. Large, semi-double to peony form.

KIMBERLEY—Carmine with red stamens. Medium, single. Profuse bloomer. Very showy.

KING LEAR—Cherry-red, marbled with white. Variegated form of Finlandia. Vigorous, compact growth.

KISHU TSUKASA (Capt. John Sutter)—Deep pink, blotched with white. Large, formal double.

KUMASAKA—Rose-pink. Large, full double. Upright and compact growth. Profuse bloomer.

LADY CHARLOTTE—Clear light pink with lighter pink veins. Large, semi-double. Very compact growth.

LADY CLARE—Rose-pink. Very large, semi-double. Prominent golden stamens.

LADY LUCILLE—Very large, full double to peony. Creamy white. Outstanding.

12"-18"	18"-24"	24"-30"	30"-36"
4.00*	5.00*	7.50*
4.00*
2.50	3.50	6.00
2.50	3.50	7.50*	10.00*
2.50	3.50	6.00
2.00	3.00	5.00	6.50
2.50	3.50
2.00	3.00	5.00	6.50
5.00*	6.50*

NEWEST CAMELLIAS

Nuccio's Nurseries maintain a steady program of breeding, with hundreds of new seedlings coming to bloom before our critical eyes each year. From this sustained search for new and better camellias have come several fine varieties. Those now available for public distribution, and listed in their alphabetical order in the catalog are: KATHERINE NUCCIO, MASQUERADE, PRIMAVERA and WARRIOR.



ANTE



PROF. C. S. SARGENT



CHANDLERI ELEGANS VAR.

VARIETY	SIZES			
	12"-18"	18"-24"	24"-30"	30"-36"
LADY MARY CROMARTIE —Deep rose-pink. Large petaled, semi-double. Upright, compact growth.	2.50	3.50	7.50*
LADY SADIE —White. Large, semi-double with fluted petals that intermix with golden stamens.	4.00*	5.00*
LADY VANSITTART VAR. —White to blush pink, striped with pink. Large, semi-double. Profuse bloomer.	2.50	3.50	6.00
LALLAROOK (Laurel Leaf)—Pink, marbled with white. Large, full double imbricated. Excellent cut flower.	2.50	3.50	6.00	7.50
LAWRENCE WALKER —Brilliant red. Very large, loose peony form.	5.00*	6.50*
LENA JACKSON —New. Large, blush pink. Formal to semi-double.	7.50*
LETITIA SCHRADER —Dark, bright red. Very large peony form.	5.00*
LINDSAY NEILL —Dark red, marbled with white. Large semi-double to loose peony form. Very slow, compact growth.	2.50	6.00	7.50
LOTUS —White. Very large semi-double, showing prominent stamens.	2.50	3.50
LOUISE McCLAY —Deep pink, heavily veined. Large semi-double with wavy petals.	2.50
LOUISE McCLAY VAR. —Deep pink blotched with white. Variegated form of Louise McClay.	5.00*	7.50*
MADGE MILLER (Chandleri Alba)—White. Large semi-double to anemone form.	2.50	3.50	6.00
MAGNOLIAFLORA —Still one of the best of the pale pink semi-doubles. Its very compact, upright growth makes it a handsome shrub.	4.00*	5.00*	7.50*	10.00*
MAGNOLIA QUEEN —White with an occasional rose-red blotch and a few light pink stripes. Large, irregular semi-double with flat blossoms.	4.00*	5.00*	7.50*
MARCHIONESS OF EXETER —Light pink. Large, heavy, full peony form.	2.00	3.00	5.00	6.00
MARGARETE HERTRICK —White. Medium-large, formal double, consisting of numerous petals. Good cut flower.	3.00	7.50	10.00
MARGARET HIGDON —Rose-red, occasionally showing white margined petals. Large, semi-double.	2.50	3.50	6.00
MARGARET WALKER —A beautiful variegated camellia. White, striped with pink. Large, semi-double to rose form double.	4.00*
MARJORIE MAGNIFICENT —Pale pink, semi-double to peony form. Outstanding.	7.50*	10.00*
MARQUIS DE EXETER —Flesh pink, striped and speckled with deep pink. Large, full peony.	2.00	3.00
MARQUIS DE MONTCALM VAR. —Rose-pink mottled with white. Large, semi-double, pine cone formation.	4.00*	5.00*
MARTHA BRICE —Light pink. Large, semi-double to loose peony form.	4.00*	5.00*	7.50*	10.00*
MARY CHARLOTTE —Pale pink. Medium to large anemone form.	4.00*	5.00*	7.50*	10.00*

VARIETY

SIZES

12"-18" 18"-24" 24"-30" 30"-36"

MASTERPIECE—This new seedling, developed by Mr. Harvey Short, has proven to be a real "Masterpiece". Its 4½ to 5 inch pure white, rose form blossoms are deep petaled, cup shaped and 3 inches deep. Foliage unusually large with open, vigorous growth, makes this camellia a very handsome shrub as well as a beautiful flower. Blooming season early—mid-season.

12.50*

MASQUERADE (N #404) — This new seedling first bloomed in our nurseries in 1948. Last season it won blue ribbons wherever entered in seedling competition. (Frank Williams Award Winner 1952.) A very large, semi-double to loose anemone form. White with an occasional fuchsia pink or rose pink marking. Foliage, long, dark green with habit of growth spreading yet very compact.

10.00*

MATHOTIANA (Julia Drayton)—Crimson red. Very large, full double imbricated showing stamens when fully opened.

2.50 3.50 6.00 7.50

MAX GOODLEY—New. Very large, pale pink, irregular semi-double. Vigorous, open, upright growth.

5.00* 6.50*

MEREDITH LAKE—Pale lavender-pink. Medium, semi-double.

2.00 3.00 5.00 6.50

MIYA (Edith Nichols)—Pale pink. Medium to large, irregular semi-double.

4.00* 5.00* 7.50* 10.00*

MME. CHARLES BLARD—White. Large, full peony form.

3.00 4.00 7.50

MME. HAHN—Bright pink. Large, semi-double to peony form. Very beautiful.

3.00 4.00 7.50 10.00

MME. HOVEY—Pink, fading to a lighter shade of pink at center of blossom. Medium to large, formal double.

2.00 3.00 5.00 6.50

MOLLIE MOORE DAVIS—A very beautiful, large, deep rose-pink sport of Big Beauty. Outstanding.

5.00*

MONJISU VAR.—Red marbled with white. Medium, semi-double. Profuse bloomer.

2.00 3.00 5.00 6.50

MORNING GLOW—White. Large, formal double imbricated.

5.00* 6.50* 7.50* 10.00*

MT. SHASTA—White. Large, full peony form. Upright, compact growth.

2.50 3.50 6.00 7.50

MRS. BALDWIN WOOD—White with vivid pink stripe on one or more petals. Large, irregular semi-double to rose form.

4.00* 5.00*

MRS. BERTHA HARMS—A very large semi-double. Ivory white with blush pink cast.

5.00*

MRS. CHARLES COBB—Dark, coppery red. Large, semi-double to loose peony form.

2.50 3.50 6.00 7.50

MRS. CHAS. SIMMONS—Creamy white. Large, semi-double to loose peony form.

2.50 3.50 6.00

MRS. FREEMAN WEISS—Pink, occasionally mottled with white. Large, semi-double with wavy petals.

4.00* 5.00* 7.50*

MRS. HOWARD ASPER—Light pink. Very large cup shaped, semi-double. Believed to be the same as Hana Fuki.

4.00* 5.00* 7.50* 10.00*

MRS. K. SAWADA (U. S. Pat. No. 481) — Beautiful delicate pink, formal double.

3.00 4.00 10.00*

MRS. MARIE KEATING—Light pink. Medium-large, semi-double to peony form.

2.00 3.00 5.00 6.50



POPE PIUS IX



MAGNOLIAFLORA

VARIETY

SIZES

12"-18" 18"-24" 24"-30" 30"-36"

MRS. NELLIE EASTMAN —New. Flesh pink, speckled and striped with deep rose. Medium-large, full peony form. Very beautiful.	5.00*	6.50*
MRS. ROE'S FAVORITE —Rose-pink. Large, irregular semi-double with twisted petals surrounding stamens.	2.50	3.50	6.00	7.50
MRS. SHEPHERDSON —A large white striped with pink. Anemone form. New.	5.00*
MRS. TINGLEY —Light silvery-pink. Medium to large, formal double imbricated.	4.00*	5.00*	7.50*	10.00*
MRS. WALTER ALLAN —Rose-red. Large, semi-double.	4.00*	5.00*	7.50*
MY DARLING —Beautiful, small, soft pink. Single. Resembles a poppy.	4.00*
NAGASAKI —Rose-pink marbled with white. Very large, semi-double.	2.00	3.00	5.00	6.50
OKI-NO-NAMI —Vivid orange-red. Large, semi-double. Very showy.	2.50	3.50	6.00
ONIJI —Deep pink marbled with white. Very large semi-double. Variegated form of Lady Clare.	4.00*
PAEONIAEFLORA —Creamy-white with a few rose-red stripes and speckles. Very large, loose peony form.	2.00	3.00	5.00	6.50
PAULETTE GODDARD —Red. Very large, semi-double to loose peony form.	4.00*	5.00*	7.50*	10.00*
PAX —White. Large, flat formal double. A favorite formal white.	2.50	3.50	6.00	7.50
PEARL HARBOR —Dark red. Large, irregular semi-double.	4.00*	5.00*	7.50*	10.00*
PEARL MAXWELL —A beautiful, large formal double. Soft pink. A glorified Pink Perfection.	7.50*
PINK BALL —Soft pink. Medium-large, full peony form. Heavy bloomer.	2.00	3.00	5.00	6.50
PINK BLEICHROEDER (Anne Galli)—Light, clear pink. Medium, formal double. Sport of Bleichroeder.	2.00	3.00	5.00	6.50
PINK DUCHESS OF SUTHERLAND —Clear pink sport of Duchess of Sutherland.	4.00*	5.00*	7.50*
PINK PERFECTION —Shell pink. Medium, formal double.	1.50	2.50	5.00	6.00
PINK STAR —Rose-pink. Large, irregular semi-double.	2.00	3.00	5.00	6.50

VARIETY	SIZES			
	12"-18"	18"-24"	24"-30"	30"-36"
POPE PIUS IX —Rich orange-red. Large, formal double imbricated.	2.50	3.50	6.00	7.50
PRIDE OF DESCANSO —White. Very large, semi-double to loose peony form.	4.00*	5.00*	7.50*	10.00*
PRIMAVERA (N #105) —A 3½-4 inch full double formal, with a high center, consisting of 55-60 petals. Pure white. Some blossoms show a small petaloid center when fully opened. This seedling first bloomed in 1943, starting its season in February and continuing through April. It is one of the few late blooming varieties that produces good blossoms in the late season. A profuse bloomer with dark green, medium size foliage.	4.00*	5.00*	7.50*
PRINCE FREDERICK WILLIAM —Large, light pink, formal double of outstanding beauty. Australian import.	7.50*
PROF. C. S. SARGENT —Dark-red. Medium, full peony form.	2.00	3.00	5.00	6.00
PURITY —White. Medium-large, formal double showing stamens when fully opened.	1.50	2.50	5.00	6.00
QUEEN BESSIE —Blush pink. Large, semi-double with wavy petals.	2.00	3.00	5.00
QUEEN VICTORIA'S BLUSH —Pale pink spotted with rose-pink. Medium-large, formal double.	2.00	3.00
REGINA DEI GIGANTI —Bright pink. Large, fluted petals, semi-double.	2.00	3.00	6.00*	7.50*
RETICULATA —Brilliant pink. Very large, wavy and fluted petals, semi-double.	5.00*	6.50*	7.50*	10.00*
REV. JOHN BENNETT —Salmon-pink. Very large, semi-double.	2.50	3.50	6.00
RISING SUN —Vivid crimson with red stamens tipped with yellow anthers. Medium-large, single.	4.00*
ROOSEVELT BLUES —Purplish-red. Large, semi-double to peony form.	3.50*
ROOSEVELT BLUES VAR. —Purplish-red blotched with white. Variegated form of Roosevelt Blues.	3.50*
ROSARY —Light rose-pink. Large, loose, irregular semi-double.	4.00*	5.00*	7.50*	10.00*
ROSARY VAR. —Light rose-pink mottled with white. Irregular semi-double. Variegated form of Rosary.	4.00*
ROSEA PLENA —Rose-pink with dark veins. Large, rose form double.	4.00*	5.00*	7.50*	10.00*
ROSEA SUPERBA —Rose-pink. Very large, rose form double.	2.50	3.50	6.00
ROSEA SUPERBA VAR. —Rose-pink mottled with white. Variegated form of Rosea Superba.	4.00*	5.00*	7.50*
ROSE DAWN —Deep rose-pink. Medium-large, formal double.	2.50	3.50	6.00	7.50
ROSE GLORY —Deep pink. Large, irregular semi-double.	2.00	3.00
SARA-SA —Flesh pink, spotted and striped with darker pink. Large, semi-double.	2.50	3.50

Nuccio's Special Quantity Prices

12"-18" Size Plants:

PRICED AT	ANY 4	ANY 8	ANY 12
\$1.50	\$ 5.50	\$10.75	\$15.75
2.00	7.25	14.25	21.00
2.50	9.00	17.75	26.00
3.00	10.75	21.00	31.00
4.00	14.25	28.00	42.50
5.00	17.50	35.00	52.50

VARIETY	SIZES			
	12"-18"	18"-24"	24"-30"	30"-36"
SCENTED TREASURE —This is the first release of this fine new seedling developed by Mr. Harvey Short. Its 3 to 4 inch full double, peony form, deep cherry red blossoms have the spicy fragrance of English Pinks. Profuse and extremely early season of bloom.	8.50*
SEN. DUNCAN U. FLETCHER —Rose-red. Large, irregular semi-double to peony form.	2.50	3.50	6.00
SHIN AKEBONO —Pale pink. Large, single to semi-double.	4.00*	5.00*
SHIRO TAMA —White. Medium-large, rose form double.	2.50	3.50	6.00	7.50
SIERRA SPRING —Bright pink heavily mottled with white. Large, semi-double.	4.00*	5.00*	7.50*	10.00*
SMILING BEAUTY —Delicate pink. Medium-large, semi-double.	4.00*	5.00*	7.50*
S. PETER NYCE —New. A beautiful predominantly white sport of Nagasaki. Winner of Best Flower Award in So. California Camellia Society Show 1952.	7.50*
SWEET DELIGHT —Rose-pink. Semi-double to peony form. Fragrant.	2.50	3.50	6.00	7.50
SWEETI VERA —Flesh pink mottled with white with deeper pink speckles. Large, peony form.	4.00*	5.00*
SWEET SIXTEEN —Pale pink. Large, irregular semi-double.	4.00*	5.00*	7.50*
ST. ANDRE —Brilliant red. Very large, semi-double to anemone form.	4.00*	5.00*
TALLAHASSEE GIRL —Large, semi-double to loose peony form. Very soft pink.	4.00*	5.00*
THELMA DALE —Silvery-pink. Large, semi-double to rose form double. (Sport of Mrs. Baldwin Wood.)	5.00*
TIARA VAR. —Orange-red mottled with white. Large, semi-double to formal double.	3.00
TINSIE —Bright red outer guard petals with white peony center.	4.00*	5.00*
VASHTI —One of the best mid-season to late blooming camellias. Medium size, rose form to full double. White blotched and striped pink.	5.00*
VEDRINE (Ruby Glow) —Ruby-red. Large, semi-double to loose peony form.	2.50	3.50	6.00	7.50
VICTORY —Rose-red. Large, semi-double to full peony form.	2.00	3.00
VICTORY WHITE —White. Large, semi-double peony form.	2.50	3.50	6.00	7.50
VILLE DE NANTES VAR. Dark red blotched with white. Large, irregular semi-double with edges of petals fimbriated.	5.00*	6.00*	7.50*	10.00*
VIRGIN'S BLUSH —Blush white. Medium, semi-double to peony form.	4.00*	5.00*	7.50*	10.00*
WARD'S DAIKAGURA —Heavily mottled with white strain of Daikagura.	5.00*
WARRIOR (N #107) —A 4-4½ inch semi-double to full peony form, brilliant, dark red with golden stamens. Approximately 25 large, round, wavy guard petals with golden stamens and small petals intermixed in center of flower. Foliage, light green, medium size. An upright grower. Blooms early to mid-season.	4.00	5.00	7.50
WHITE EMPRESS —White. Very large, irregular semi-double.	5.00*	6.00*
WHITE GIANT —White. Very large, semi-double.	4.00*	5.00*
YOBEKI DORI —A very large semi-double white, flushed pale pink.	5.00*
YOHEI HAKU —White to creamy white, often tinted blush pink. Large, loose double peony form. Extremely early bloomer.	3.00	4.00	6.50	8.50

SASANQUA CAMELLIAS

In the past few years the Sasanqua has at last been gaining the added popularity it rightfully deserves. Its hardiness, early and profusion of bloom (September to January), small, dark evergreen foliage make it a valuable addition to our landscape. Sasankuas thrive in full sun or a partially shaded area and may be used as hedges, ground covers, vines or specimens. Care and culture of the Sasanqua is identical to that of the Japonica.

VARIETY	SIZES			
	12"-18"	18"-24"	24"-30"	30"-36"
BRIAR ROSE —Delicate clear pink. Medium size. Upright and spreading.	2.00	3.00
BRILLIANCY —Bright rose-pink. Very compact. Single.	3.00	4.00	6.00
BUTTERFLY —Single white, pink margin. Very vigorous.	3.00	4.00	6.00
CLEOPATRA —Rose-pink. Semi-double to peony type. Very compact.	4.00*	6.00
CRIMSON BRIDE —Single, dark crimson red.	3.00	4.00	6.00
DAWN —Beautiful single to semi-double, ivory white with blush pink at the margins of petals. Upright and compact growth.	4.00*	6.00
FLORIBUNDA —Single white, edged lavender-pink. Vigorous, upright and compact.	3.00	4.00	6.00
GIN-NO-SAE —Small, creamy white, full anemone form. Spreading growth.	4.00*
GULF GLORY —Single white, large blossom. Upright and spreading.	4.00
HANA JIMAN —Large single white, tipped with pink. Fluted petals. Vigorous, upright and compact.	4.00*	5.00*	7.50*
HINODEGUMA —Large, single white with pink edge. Upright and compact.	4.00*	5.00*	7.50*
HIRYO —Deep crimson-red. Double. Vigorous open growth.	4.00*
HUGH EVANS —Profuse bloomer. Single pink. Vigorous, upright and compact.	2.00	3.00	5.00
KOWGYOKU (Little Gem)—Small, full formal double, white with edge of petals slightly marked with pink.	4.00*
LAVENDER QUEEN —Large, single, lavender-pink.	4.00*	5.00*	7.50*
MAIDEN'S BLUSH —Single, delicate pink.	3.00	4.00
MININA —Large, single, light pink. Upright, compact growth with very small foliage.	2.00	3.50
MOMOZONO NISHIKI —Single, pale pink, shading to rose-red border. Vigorous, upright growth.	4.00*
NARUMIGATA —Single white, shaded with pink. Very large. Compact.	4.00*	5.00*
NODAMI USHIRO —Large, deep pink, semi-double. Vigorous, compact growth.	4.00*	5.00*	7.50*
OLEIFERA —Very large, single white with crinkled petals, edged with pink.	4.00*	5.00*	7.50*
PAPAVAR —Large, single, bell shaped. Soft pink. Slender, upright growth.	4.00*
ROSY MIST —Large, single, delicate soft pink. Spreading grower.	4.00*	5.00*	7.50*
SETSUGEKKA —A large single to semi-double white with ruffled petals that are slightly marked with pink at edges.	4.00*
SHISHI GASHIRA —Double, bright rose-red. Slow, low and compact.	4.00*	5.00*
SHISHIFUKUJIN —Very large, clear, soft pink. Single to semi-double. Upright, compact growth.	4.00*
SHOWA-NO-SAKAE —Semi-double to peony. Soft pink. Slow, low and compact.	2.50	6.00	7.50
VELVETY —Single, velvety, crimson-red. Compact.	3.00	4.00
VERISCOLOR —Single pink with white center and lavender edge. Upright, compact.	4.00*	5.00*
WHITE DOVE —White, semi-double to loose peony form. Vigorous, spreading grower.	2.50	3.50
WHITE QUEEN —Large, single white with showy stamens.	4.00*	5.00*	7.50*
WILLOW LEAF —Single white, margined with pink. Upright, compact.	4.00*	5.00*
YAE ARARE —Beautiful, large, single white with petals tipped pink. Vigorous, bushy, upright growth.	4.00*	5.00*

* An asterisk after the prices denotes grafted plants

SWEENEY, KRIST & DIMM, HORTICULTURAL PRINTERS, PORTLAND, OREGON



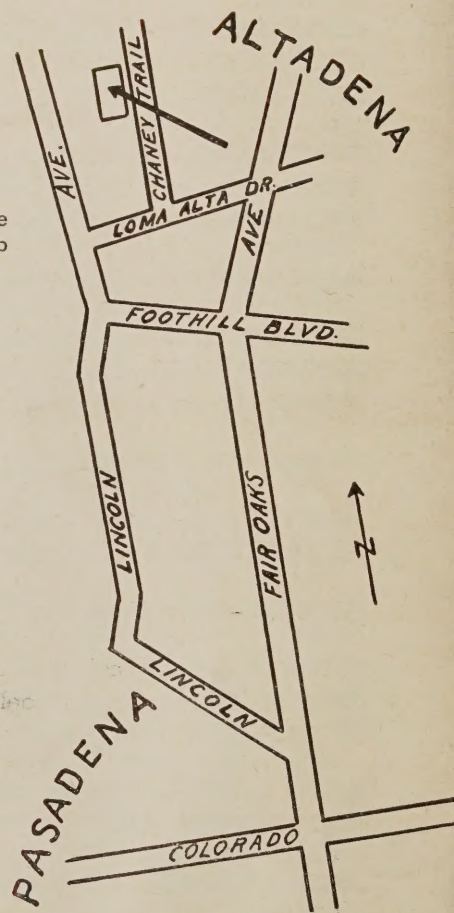
C. M. WILSON



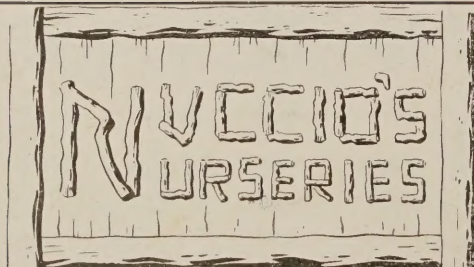
VILLE DE NANTES VAR.

*Here's
How!*

Come to visit us when you're
in our neighborhood. This map
shows you how to find us.
You'll be a welcome guest.



GOVERNOR EARL WARREN



3555 Chaney Trail, Altadena, California

POSTMASTER: Form 3547 Requested.

Library
U.S. Dept. of Agriculture
Washington 25, D.C.

